

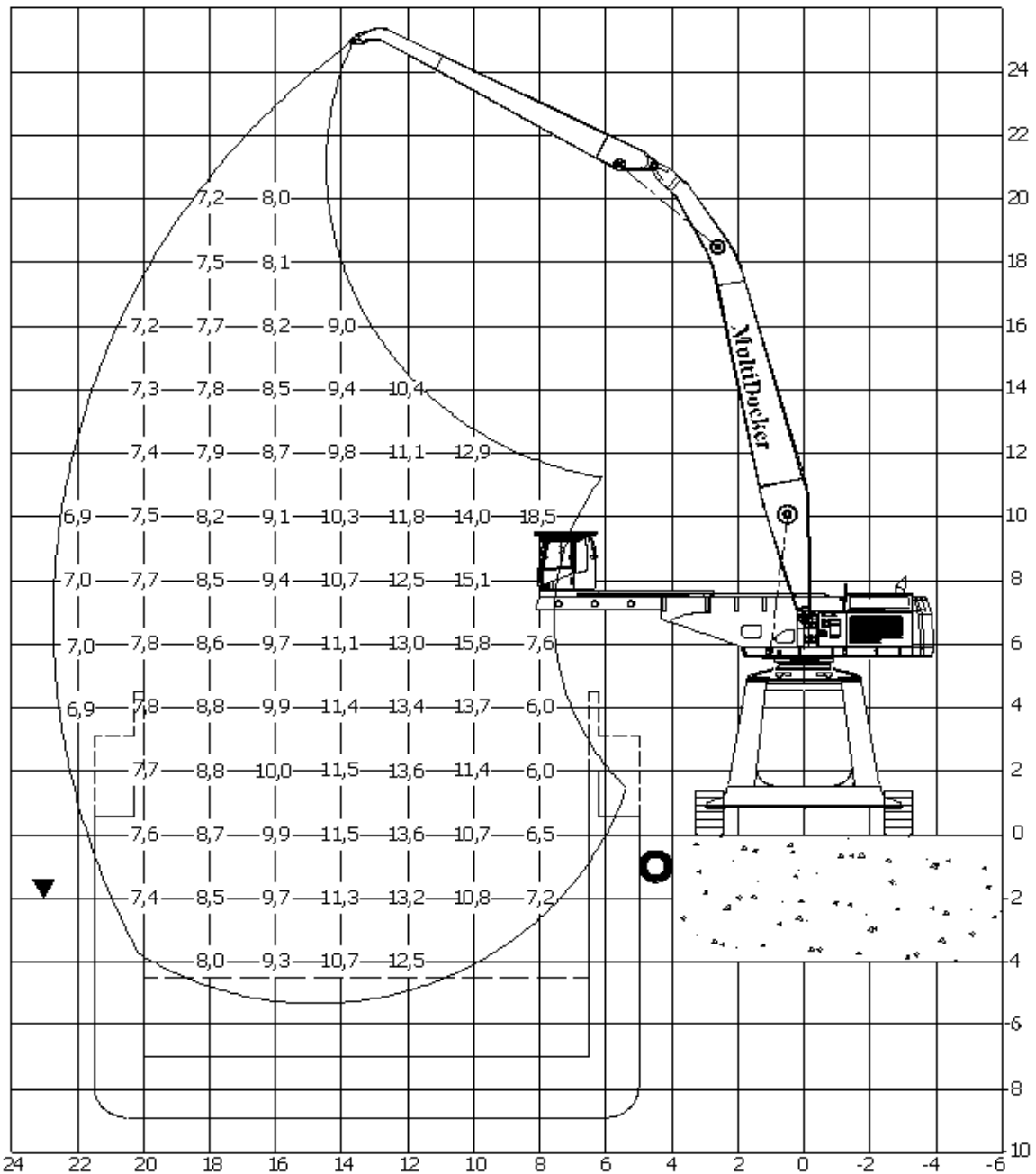
Technical Specification

UCR4000

Base Information	
Base machine	Caterpillar 365C
Weight	Abt 99 500 kg
Maximum reach	24,5 metre
Body extension	UCR4000
Engine	
Model	Caterpillar C15 ACERT
Net power	302 kW
Piston displacement	15,2 litre
Hydraulic system	
Max. flow, working pumps	2x 400 l/min
Max. flow, swing pump	360 l/min
Max. pressure, main circuit - normal mode	32 000 kPa
Max. pressure, main circuit - heavy lift mode	35 000 kPa
Travel	35 000 kPa
Swing	28 050 kPa
Undercarriage	
Track Frame	Caterpillar 365 special
Track (flat) shoe width	750 mm
Max. tractive force	462 kN
Max. speed	4.1 km/h
Volumes	
Fuel tank	935 litre
Cooling system	95 litre
Engine crankcase	65 litre
Swing drive (drive)	12 litre
Final drive (each)	15 litre
Hydraulic system	Abt. 800 litre
Weight main components	
Base machine	30 500 kg
Counterweight	14 000 kg
Boom	8 600 kg
Stick	3 300 kg
Track frame (each)	14 500 kg
Body extension	13 500 kg

UCR4000 – 22,7 m (Boom 14,95, Stick 9,9)

MultiDocker CH65 C
UCR4000 – 22,7 m
(Boom 14,95 m & Stick 9,9 m)



Lifting capacity table, unit tonne = 1.000 kg

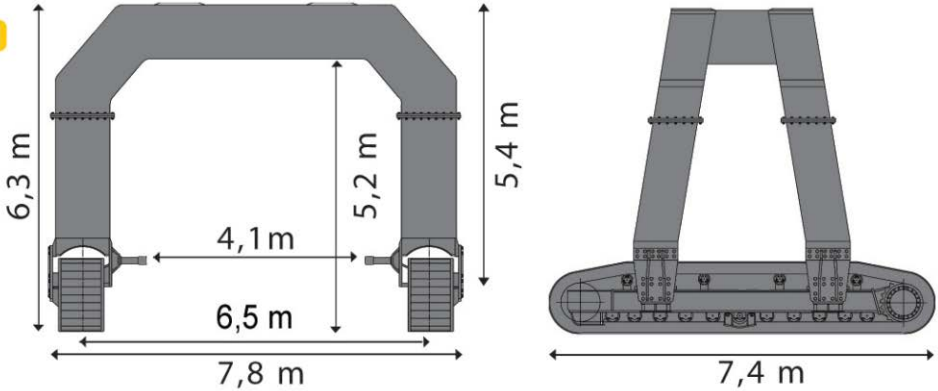
The lifting capacities are measured at 360° in the dipper arm end-joint. The above values have been calculated in compliance with ISO standard 10567. They do not exceed 87% of the hydraulic lifting capacity or 75% of the tipping load, with the machine on firm, level ground.

All figures given represent heavy lift mode (350 bar)

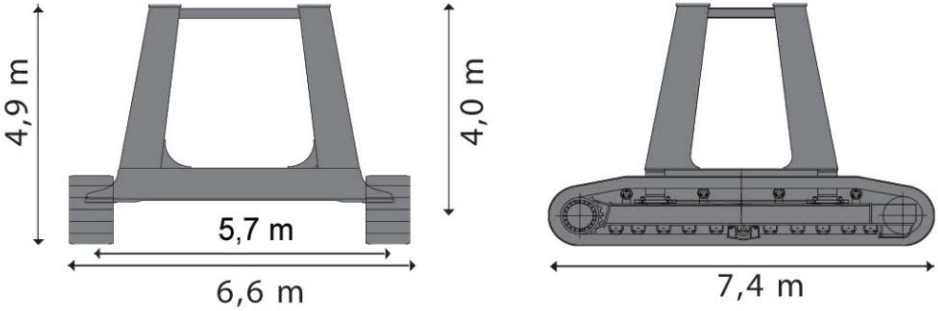
Dimensions

Undercarriage

Gantry 5500



UCR 4000



UCR 2500

